



RZNC-Software

Software Installation

Connect with PC

Mob:+86-13581806922
[Http://www.richnc.com](http://www.richnc.com)
E-mail:richnc@hotmail.com

Software Installation With PC

1. Computer Hardware Requirements:

CPU: PIII 450 and more;

O S: Win2000 or XP and more

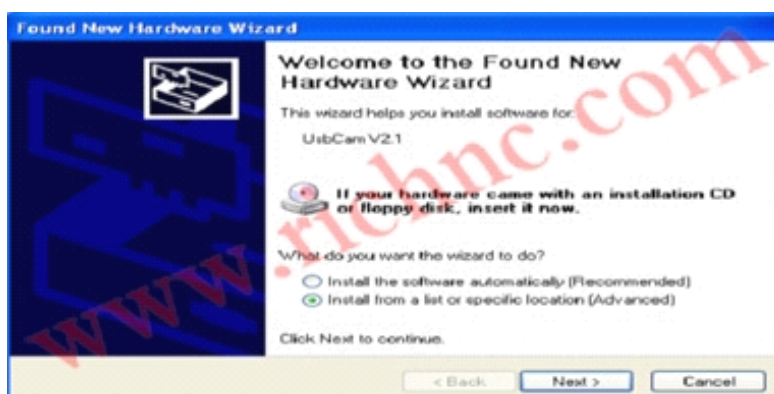
2. Please [choose](#) and [download](#) the correct USBCAM Driver version which it suit your PC Windows system from [Http://www.richnc.com](http://www.richnc.com) ,uncompress and saved(e.g. Uncompress and saved it on D:\UsbCam).

3.Plug the RZNC-05 Series(CNC Controller) in to your computer through the USB cable,wait a while until the computer appear "[found new hardware](#)" (as View 3-1);



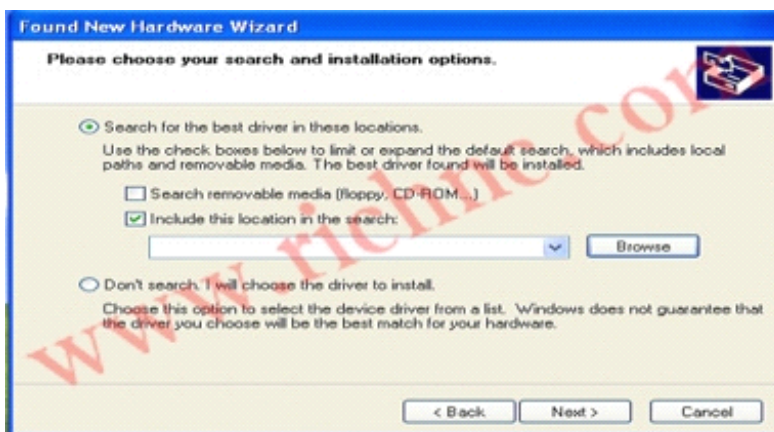
View 3-1

4. Click on the clue,It appears setup information, select the second item which is"[install from a list or special location](#)" (as View 3-2);



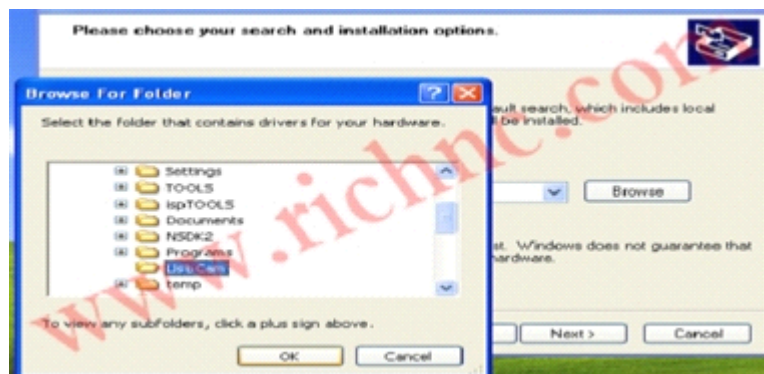
View 3-2

5. Click on "[Next](#)" button,Choose "[include this location in the search](#)" (as View 3-3);



View 3-3

6. Click on "Browse" icon to find the location, please found and select the D:\UsbCam (as View 3-4);



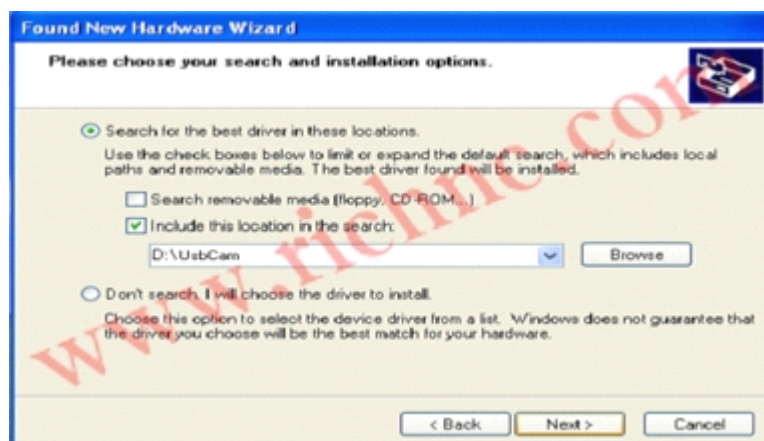
View 3-4

Remark:

If your found and select the correct file ,the "OK" will able to be clicked,

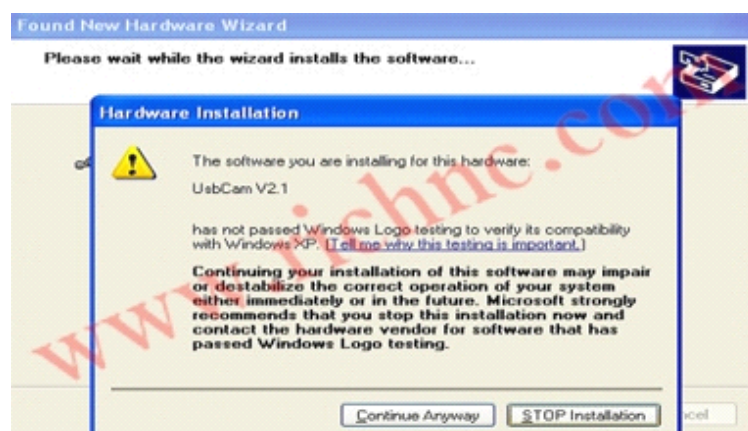
If your found and select the wrong file, the "OK" will unable to be clicked, please make sure the "UabCam" file Uncompress and exists.

7. Click on "OK" button to make sure the correct files (as View 3-5)



View 3-5

8. Click on "Next" button to install UsbCam, the system will show you some informations (as View 3-6)



View 3-6

9. Please choose the "Continue Anyway" to continue installing. If all steps is correct the

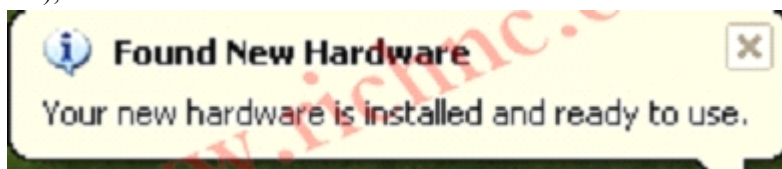
system will show your this informations (as View 3-7)



View 3-7

10. Please click on the "Finish" button to finish the UsbCam install.

11. Please wait a while until the computer appear "your new hardware is installed and ready to use" (as View 3-8);



View 3-8

12. The UsbCam Driver had installed, you can open the software for operations.

Good luck!

If have any questions please the frist contact the Mr.Jery-Jiang, thank you!!!

NOTICE:

Press the "DELETE" key when the DSP show you "go to home" connect with the PC.
Press the "OK" key when the DSP show you "go to home" connect with the machine.